



COMPANY PROFILE

**P.O. BOX 41140 , SALWA ROAD
N.B.K. COMPOUND, J2 BLOCK
DOHA-QATAR**

TEL: +974 44681581

FAX : +974 44681103

E-MAIL : qsh@qatarspeedhouse.com

WEB : www.qatarspeedhouse.com

INDEX

DESCRIPTION

- ❖ INTRODUCTION
- ❖ AFFILIATED COMPANIES

- ❖ OUR SERVICE / PRODUCTS PROTFOLIO
- ❖ DIFFERENT TYPES OF BULDING SYSTEM
- ❖ PROJECT PORTFOLIO
- ❖ LIST OF COMPLETED AND ONGOING PROJECTS
- ❖ LIST OF FEW MAJOR CLIENTS
- ❖ ORGANIZATION CHART
- ❖ COMPANY CERTIFICATES
- ❖ COMPANY LICENSE
- ❖ INSTALLATION AND MAINTENANCE
- ❖ QUALITY ASSURANCE AND QUALITY CONTROL
- ❖ HEALTH AND SAFETY PLAN

INTRODUCTION



OVERVIEW

ABOUT US

It all began when our chairman, Mr. Khalid A M Khalafallah , founded the ‘Qatar speed house ’ in 2001. Qatar Speed House was the flagship construction company of Aal Imran Group of Companies(Estd. 1981). Since inception, the group has evolved by leaps and bounds and currently has several companies under its banner. The focus has not just been on construction of property but realization of our customers’ dreams.

OUR VISION AND MISSION

Our company philosophy of Trust, Reliability, Affordability and Credibility speaks volumes about our commitment and drive for service excellence. We dared to dream big; a dream to give best solutions. Qatar Speed House takes pride in being a premier prefab building manufacturer company that has successfully turned the dreams of company across the length and breadth of our State of Qatar into reality. We will strive to continually improve working environment and practices setting objectives to assists in achieving our aim, we will measure achievements of these objectives and the effects of improvements upon our customers and ourselves.



قطر للمساكن السريعة QATAR SPEED HOUSE

ISO 9001: 2008
ISO 14001:2004

ذ.م.م. W.L.L.

تصنيع ومبيع جميع أنواع
البيوت الجاهزة
مساجد ، فيلات ، شاليهات
مطاعم ، مطابخ ، حمامات

Manufacturing & Selling
all types of prefab. Houses
Mosques, Villas, Chalets,
Restaurants, Kitchens &
Ablution

Company Message

Greeting from Qatar Speed House

Dear Valued Customer,

Please allow us to introduce our self as one of the fastest growing company in State of Qatar.

It all began when Qatar Speed House was founded in **2001**. Qatar Speed House was the flagship construction company of **Aal Imran Group** of Companies (estd 1981). Since inception, the group has evolved by leaps and bounds and currently has several companies under its banner. The focus has not just been on construction of property but realization of our customer's dreams.

An **ISO 9001:2015, ISO 14001:2004** certified company, **Qatar Speed House** is one of the leading prefab building manufacturer in State of Qatar with over 350 employees. Our commitment is to meet quality and customer's trust.

The company managed by a team of dedicated and highly experienced personnel who are committed in helping clients to make the right decision.

We are the leading company of manufacturing, maintenance and renting of all kinds of portacabins, turnkey prefab projects including MEP works, civil works, containers, light gauge steel buildings, pre engineering and prefab buildings, temporary site offices and camps, warehouses and steel structure, single storey and double storey site offices, labor camps and multi storey accommodation buildings (up to 3rd floors).



قطر للمساكن السريعة

QATAR SPEED HOUSE

ذ.م.م. W.L.L.

تصنيع ومبيع جميع أنواع
البيوت الجاهزة
مساجد، فيلات، شاليهات
مطاعم، مطابخ، حمامات

Manufacturing & Selling
all types of prefab. Houses
Mosques, Villas, Chalets,
Restaurants, Kitchens &
Ablution

ISO 9001: 2008
ISO 14001:2004

Our company philosophy of Trust, Reliability, Affordability and Credibility speaks volumes about our commitment and drive for service excellence. We dared to dream big; a dream to give best solutions. Our completed and ongoing projects have become landmarks of their respective fields; which is proof of our untiring effort to always fulfill our promises.

En route to success, our unique business model is more to do with meeting the necessities and investment opportunities. We are proud to have an edge over our competitors.

Today QSH takes pride in being a premier prefab building manufacturer company that has successfully turned the dreams of company across the length and breadth of our State of Qatar into reality.

Our commitment to quality has brought us the membership and many certifications. Moving forward, we know the road ahead is longer and exciting. We have many more milestones to establish. However, every milestone takes us back to where it began: a vision and dream.

We have successfully met the requirements of some of our major clients as follows:

- ❖ General Authority of Customs
- ❖ Qatar port Management Company
- ❖ Amiri Yachts
- ❖ Board of Awqaf
- ❖ Ras Gas
- ❖ Qatar Petroleum
- ❖ Qatar Gas
- ❖ Ministry of Foreign Affairs
- ❖ Oryx GTL
- ❖ Private Engineering Office (PEO)
- ❖ Public Work Authority (Ashghal)
- ❖ Qatar Construction (QCON)



ISO 9001: 2008
ISO 14001:2004

قطر للمساكن السريعة

QATAR SPEED HOUSE

W.L.L. م.م.ذ

تصنيع ومبيع جميع أنواع
البيوت الجاهزة
مساجد ، فيلات ، شاليهات
مطاعم ، مطابخ ، حمامات

Manufacturing & Selling
all types of prefab. Houses
Mosques, Villas, Chalets,
Restaurants, Kitchens &
Ablution

- ❖ Ooredoo
- ❖ Al Jazeera Media Network
- ❖ Qatar Kentz
- ❖ Consolidated Engineering Construction Co.
- ❖ Gulf Drilling International (GDI)
- ❖ Transind Holding W.L.L
- ❖ ANEL MEP (Q-RAIL PROJECT)
- ❖ QD-CPC (Q-RAIL PROJECT)
- ❖ JV of Rizzani and Redco International (HIA)
- ❖ Impregilo-SK-Galfar (ISG-JV)
- ❖ Al Emadi Enterprises
- ❖ Ali Bin Ali
- ❖ Al-Balagh-L&T JV (Supreme Committee)

And many governmental and semi governmental organizations

Thank you for your time and consideration.

Qatar Speed House Team

AFFILIATED COMPANIES



~~OUR SERVICES / PRODUCTS~~ PROTFOLIO

Our Products Portfolio

- *Pre-Fabricated Buildings*

Pre-Fabricated Buildings

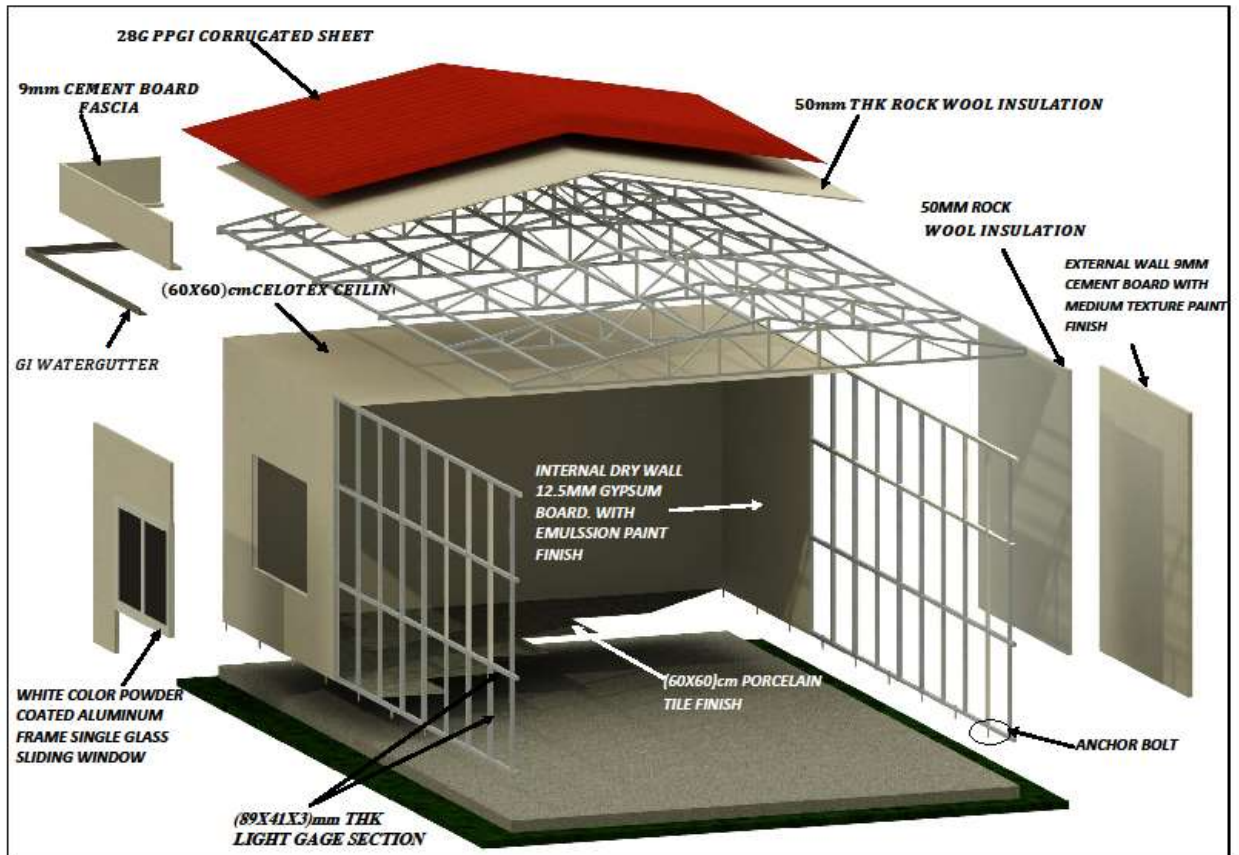
Pre fabricated buildings are self contained buildings manufactured and fitted out in the factory. They are delivered by road, ready for rapid installation at site.

Pre-fabricated buildings (generally termed as portacabins) are widely used in the construction of small buildings such as office facilities, guard and security house, site facilities, mosque and majilis, changing room, laboratories, private villas, kitchen and mess hall, toilet and ablution units and multi storey and large buildings such as labor camps, staff accommodation, G+1 upto G+3 buildings etc.

Advantages of Pre Fabricated Buildings:

- *Cost effective*
- *Fire and Heat resistant*
- *Time saving*
- *Easy for transportation to different location*
- *Ability to construct up to 3rd floors*
- * Convenience in mechanical and electrical installations*

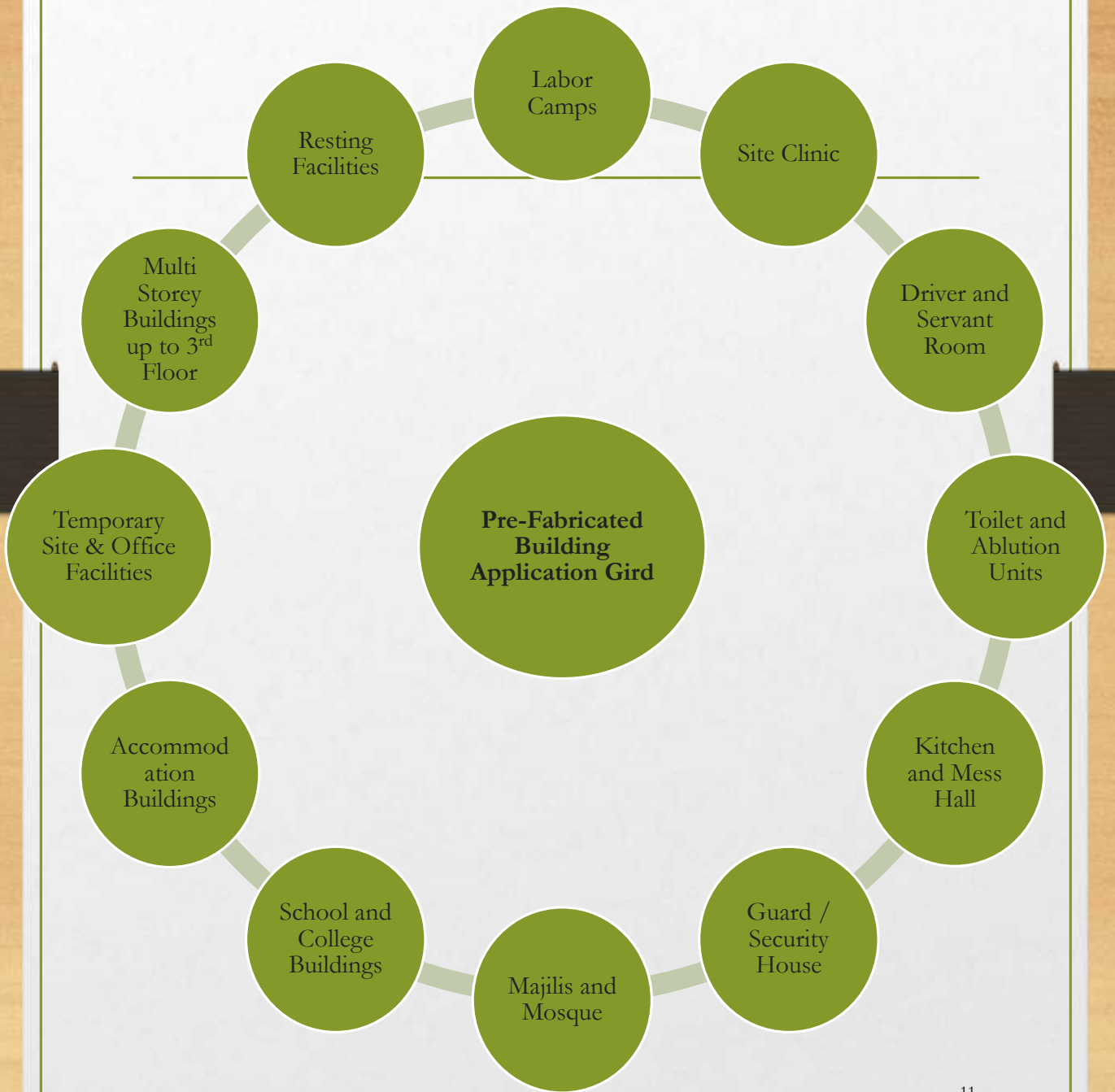
Demonstration




ELEVATION



Application Grid



- 
- *Pre-Engineered Steel Structures*

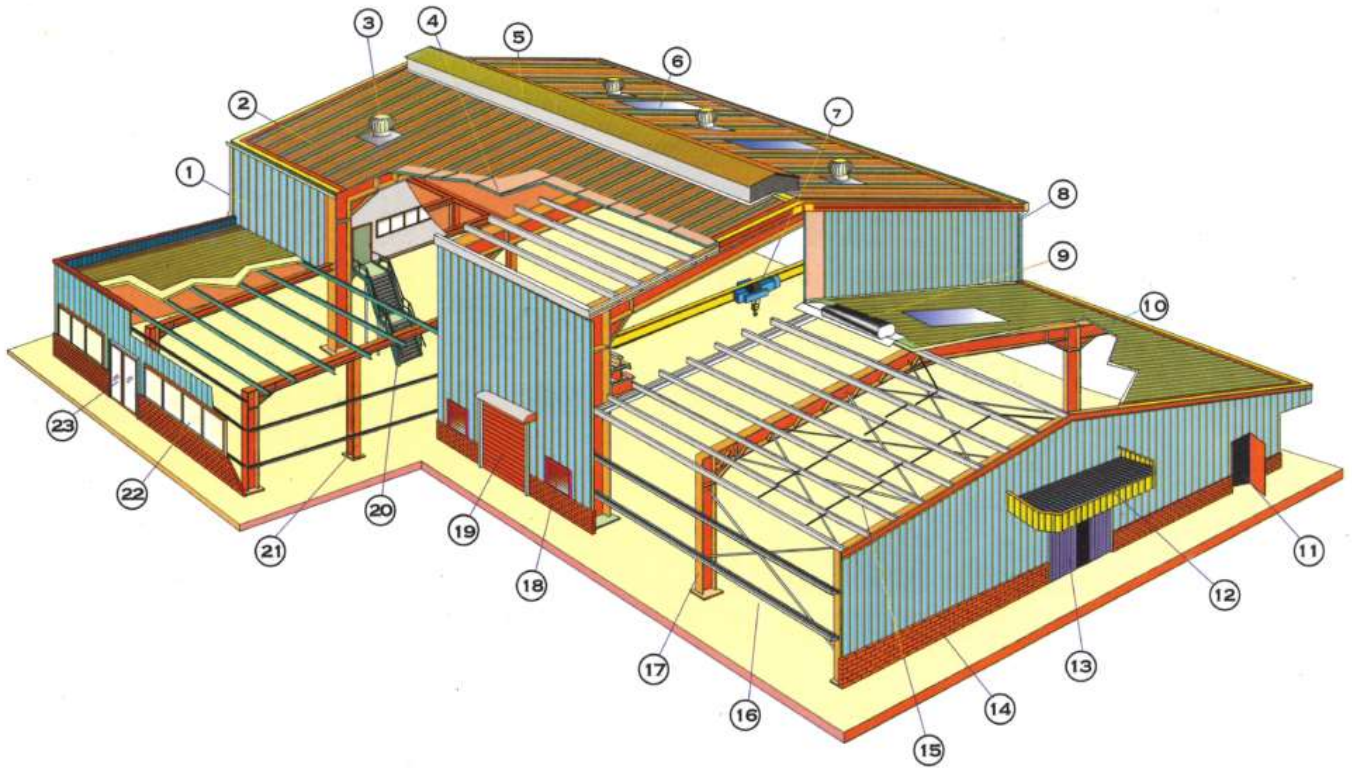
Pre-Engineered Buildings - Steel Structure

Pre Engineered steel structures are medium to large size steel buildings consisting of primary and secondary steel structural frames resting on civil foundations and provided with suitable roofing, side cladding and water down take arrangements.

Pre Engineered buildings (PEB) are factory built buildings of steel that are shifted to site and bolted together. PEB process is in house design, fabrication at factory , delivery to site and assembling using best suited inventory of raw materials.

Pre-engineered buildings are commonly used in the construction of factories, logistic centers, steel mills, warehouses, workshops, distribution centers, sports stadiums, sheds, multi storey and high rise buildings, shipyards etc.

Demonstration



LEGEND :

- | | | | | |
|-----------------|-----------------------|---------------------|--------------------|---------------------------|
| 1. Wall Panel | 6. Sky Light | 11. Personnel Door | 16. Girt & Bracing | 21. Wind Column |
| 2. Roof Panel | 7. Crane System | 12. Canopy & Facia | 17. Rigid Frame | 22. Window |
| 3. Ventilator | 8. Gutter & Downspout | 13. Sliding Door | 18. Louver | 23. Double Personnel Door |
| 4. Insulation | 9. Ridge Ventilator | 14. Brick Wall | 19. Rolling Door | |
| 5. Roof Monitor | 10. Roof Extension | 15. Purlin & Sagrod | 20. Stairs | |

PARTIAL BLOCKWALL
CORNER TRIM

PERSONNEL DOOR

Application Grid



Other Services



DIFFERENT TYPES OF BUILDING SYSTEMS

- ❖ **Standard System**
- ❖ **Modular System**
- ❖ **Light Gauge Steel System (L.G.S)**

Standard System

This system is best suited for the construction of portable units, the units consist of steel base, heat and fire resistant walls, roof trusses with heat insulation and covered by aluminium or prepainted G.I sheeting.

This system use in the construction of Mosques, Majlis, Offices, Ablutions, Kitchens, Mess Halls, Labour camp and Others.

The main advantages are

- * Ability to transport to different locations
 - * Time saving
 - * Fire resistant
 - * Heat resistant
- * Ability to construct up up to 2 floors
 - * Cost effective



Modular System

System Description

Our flexible product is custom made which is manufactured according to the clients' requirement.

Buildings can be assembled and reassembled for many times just change some spare parts.

The materials of walls are the double-face color steel sandwich panel with polystyrene layer inside. The roof tile is corrugated steel sheet with polystyrene insulation. Because of the air layer between the roof panels and ceiling, it has good insulation.

The door is made of sandwich panel and the window is made of P.V.C., The assembled house can be done only by simple tools. 6 workers can erect 40square meter in 8 hours.

One or more prefab units (960mm) can be added or deducted freely in the length and width direction.

The area of the house can be increased or decreased freely.
The position of the door, window and the wallboard can be changed freely.

The other characteristic is:

1. Steel structure for the Building
2. Panels for walls and ceiling,
3. Groove and tongue system and decorative flashing
4. Material for electrification of houses
5. Material for feeding water/drainage of houses

System Specifications

The roof and wallboard material color-steel polystyrene sandwich panel

THE WALLBOARD THICKNESS: 50mm, two faces of color steel thickness is 0.35mm

ALL THE POLYSTYRENE FOAM DENSITY: 13kgs/CBM

THE ROOF :0.35mm corrugated steel sheet with 20mm polystyrene sheet

THE WINDOWS: ~~plastic-steel frame with the 5mm thickness float glass.~~

THE DOOR: polystyrene sandwich panel.

It has the framework system as the strengthening the house.

The temperature resist from -20co to 60co.

Heat conductivity $\leq 0.041 \text{W/m.k}$

THE RESISTANT WIND SPEED: 25Meters/Second

The roof Bear the snow load 50kgs/Square Meter

FIRE PROOF: B1 grade (pyrous materials) Chinese Government Standard.

THE RESISTANT EARTHQUAKE GRADE: 7 fission activate.

WIND PRESSURE: 0.45KN/M2



Light Gauge Steel Structure System (L.G.S)

This system is best suited for construction of villas, residential and commercial
Compounds with high standards and luxury finishing.

The system has the following advantages:

- * Light weight
- * Time saving (4 times faster than traditional construction)
- * Cost effective (20% - 30% less than traditional construction)
 - * Quicker return on investment
 - * Rust and fire resistant
 - * Sound and heat proof
- * Convenience in mechanical and electrical installations
 - * Ability to construct up to 4 floors
 - * Controlled by international standards



PROJECT PORTFOLIO

Employer's main office at Al Wahda (G+1 LGS system)
Project : Construction of Doha Metro - Red Line North
Underground
Client : Qatar Rail (ISG JV)





Construction of Senior staff accommodation GDI 5th and 6th Phases
and Construction of (Prefabricated Structures) Camp
Accommodation (3rd & 4th Phase) –
Location: DSSA Camp
Client: Gulf Drilling International (GDI)- Qatar Petroleum (QP)











Design and built of Administration Office

Location: Madina Seaport

Client: Amiri Yachts



Design and Build of Administration Offices Building and Car park
Location: Doha Sea Port

Client: Qatar Port Management



Design and Build of G+3 Labor Accommodation approximate built up area
2000 sqm

Location: Shahaniya

Client: Qatar Technical Aluminum (QTA)



Design and Build of G+2 Labor Accommodation of approx area
2,300 m²

Project : Final Touch and Top Clean

Location : Umm Salal Project

Client: Transind Holding





Design and Build of G+2 Labor Accommodation

Location : Industrial Area

Client: Gulf Ware Housing





Security & passport building at Doha Wooden Boards Port

Client : Qatar Port Management Co



QCON Camp Facility at RLIC

Client - Qatar Kentz

Office for Internal Security Force

Client : Internal Security Force (Lekhwiya)





Labour Camp for **Sky Oryx**
NDIA Project



Site office for **Dar Al**
Rokham at Heart of Doha



Site offices for **Al Huda Engineering**



Office unit for **Sky Oryx (NDIA)**



Double Storey Site Office for **Oryx**
GTL at RLIC



Mosque for **Ministry of Awqaf** at Sailyah



Mosque for **Customs General Port Authority**



Majlis for Sheikh Thani Bin Khaled
Al Thani



Beach Chalet for Mr. Issa Al Mannai



Mess Hall for Sky Oryx NDIA Project



Kitchen unit for CECC at Al Ruwais



Staff & Labour Mess Halls for CECC at Al Ruwais



Ablution block for Qatar Kentz at Raslaffan



Ablution inside the villa for private customer



Ablution blocks for GDI staff accommodation at Dukhan DSSA camp



Guard Rooms for private customer



Guard Room for QDVC



Drivers and servant room for private customer

Muraikh 6 Villas Compound

This project villas compound at Muraikh area, each villa consist of 2 floors and penthouse.

Using light gauge metal sections and standard boards, high quality material finishing for all villas were utilized ensuring high class living conditions





**Warehouse for Dar Al Rokham Marble
Factory**



**Factory Dubai for Insulation & Technical
Industry**



**Cow Ban for Al Banan Farm Shed at
Raudat Al Rashed**



Villa compound for Aal Imran Housing at Mureikh area



Villa for private customer

Seilyah Labour Camp

This project constructed on an total area of 40,000 M² accommodating 1200 personals.

Common camp facilities include mess halls , kitchens, shops and recreations hall. This utilizes sandwich panel technology on steel frames ensuring a rigid building.

This project is a design and built contract.



LIST OF COMPLETED PROJECTS

Client	Work Description	Project for
Gulf Drilling International (GDI)	<p>Design, Supply and Build of Camp and Accommodation Facilities of approx (6000m²)</p> <p>*Senior staff accommodation GDI 5th and 6th Phase(Approx 3000m²)</p> <p>* (Prefabricated Structures) Camp Accommodation at DSSA (3rd & 4th Phase) Approx 2000m²</p> <p>*Erection of Recreation Facilities at DSSA(Approx 1000m²) at (DSSA CAMP DUKHAN)</p> <p>(Including Engineering Preliminaries, fire alarm and fire fighting system, foundations , internal and external electrical and drainage connections , A/Cs, staircase , voice and data system and other external works).</p>	Qatar Petroleum
Qatar Technical Aluminum	<p>Design, Supply and Installation of G+3 Accommodation at Shahaniya (Approx 2200m²)</p> <p>Including External electrical and plumbing connections including water and septic tanks, fire alarm and fire fighting system, A/Cs, external fence and gate, telephone and data system, Supply and Installation of Kerbstone and Interlock and other services</p>	QTA
Ali Bin Ali	<p>Supply and Installation of G+2 Labour Accommodation</p> <p>Including MEP service connections, foundations, voice and data system, fire alarm and fire fighting system, A/Cs and other services</p>	Ali Bin Ali
Transind Holding WLL	<p>Supply and Installation of G+2 Labor Accommodations</p> <p>Projects Name : Top Clean & Final Touch and Warehouse (Approx area 2300m²)</p> <p>Including MEP service connections, foundations, voice and data system, fire alarm and fire fighting system, A/Cs and other services</p>	Transind Holding
Al Emadi Enterprises	<p>Supply and Installation of G+1 Labor Accommodation at Industrial Area (Approx 2300m²) including all civil works and MEP works</p>	Al Emadi
ISG JV	<p>Construction of Employer's main office (G+1) , Employers satellite offices and contractor satellite offices (approx 5500m²)</p> <p>Including Engineering Preliminaries, Conventional Fire Alarm and Fire Fighting System, Telephone and Data System, Split A/Cs, Foundations and other services</p>	Qatar Rail
Qatar Port Management Co (QPMC)	<p>Construction of Qatar Port Service Complex G+1 Building - LGS system (Approx 1000m²)</p> <p>Including supply and installation of Split A/C and other services</p>	Qatar Port

Client	Project/Work Description	Client
ANEL MEP	<p>Supply and Installation of G+1 Site Office and Various Office Cabin of approx 1000m2 for Qatar Rail Project</p> <p>Supply and Installation Closed Shed, Open Shed and Workshop (Approx 2000m2) for Qatar Rail Project and</p> <p>Including foundations, periphery block works, supply and installation of Split A/Cs, Masonry steps and handrails, concrete flooring, internal electrical works, PVC Coated Fence, Gate and other services</p>	Qatar Rail
Qatar Kentz	<p>Labor and Staff Camp at Ras Laffan Area for 1000 persons.(total buildup area 6,500m²) including all landscaping works, MEP works, tanks, fence etc</p>	QCON
Galfar Al Misnad	Erection of Site Office Cabin of approx 900m2 at Dukhan	Qatar Petroleum
HBK Contracting	Supply and Installation of Laboratory Cabin and Various Site Office Cabin (Approx 350m2)	Supreme Committee
Al Jazeera Media Network	Supply of office Portacabins for AJWT Division and Operation Office including fire alarm and fire fighting system, voice and data system, A/Cs, foundations, steps, external electrical and drainage connections, water tanks and septic tanks and other services .	Al Jazeera Media Network
Sky Oryx JV	Supply & Installation of Prefabricated Office Unit of size and NDIA Staff & Labor camp (Approx 10,000m2) Doha International Airport	Doha International Airport
Consolidated Engineering (CECC)	Supply and installation of Prefabricated Mess Halls and Kitchens (Total built up area 1100M²)	CECC1
Generic Engineering Tech (GET)	Supply and Installation of High End Finishing Portacabin (Approx 200 m2) Including High End Cabin finishing, UPVC Doors and Windows, Decorative Ceiling and Flooring)	Private Engineering Office (PEO)
QCON	Supply and Installation of Office Porta cabins for Ras Gas	Ras Gas
Community College of Qatar (CCQ)	Supply and Installation of Portacabin of approx 400m2 Including masonry foundations, periphery blockwork, steps, supply and installation of split A/Cs, fire alarm system, external electrical works including excavation and other services	Community College of Qatar (CCQ)
JV of Rizzani and Redco International	Supply and Installation of Various Office Cabins (approx 400m2) including supply and installation of A/Cs, water tank and necessary service connections	Hamad International Airport

Client	Project/Work Description	Project for
Amiri Yachts	Supply and Installation of Mosque Cabin, Kitchen Mess Hall and Guard House (Total area : 270m ²) Including all related civil works, installation of Acs and external service connections	Amiri Yatch
Al Mohannadi Group	Supply and Installation of Various Office Portacabins	Al Mohannadi
Bin Ojan Trading & contracting	Supply of Toilets Unit + Various Works for Project at Um Salal	Bin Ojan Trading & contracting
Expedition Trading and Contracting	Supply and Installation of US Military Site Office at Military Base Camp (approx 300m²) Including fire alarm and fire fighting system and service connections	Expedition Trading
GEC (NASS Group)	Supply and Installation of Site Office Cabin of approx 300m² at Al Dhakira (Pumping Station and Associated Pipelines GEC/ Hyundai Rotem Project)	GEC/Hyundai Rotem
Boom Construction	Supply and Installation of Site Office of size (44.0x15.0) mtrs	Public Work Authority (PWA)
Al Jazeera Media Network	Supply and Installation of New Portacabin including civil works	Al Jazeera Media Network
Gulf Drilling International (GDI)	Design and Build Project of NEW KITCHEN at DSSA Camp at Dukhan (Approx 1000m²)	Qatar Petroleum
General Authority of Customs	Supply and Installation of X-Ray Shed of approx 800m² including C-Section and Steel Structure	General Authority of Customs
L&T and Al Balagh JV	Supply and Installation of Warehouse for (Approx 420m²) Including reinforced concrete footings and beam grounds, concrete ramps and masonry steps, steel structure and cladding works, internal electrical connections, and other services	Supreme Committee

Client	On Going Project/Work Description
Galfar Al Misnad	Supply and Installation of Accommodation Facilities (G+1 Junior Staff Accommodation of area 893 m ²) and G+1 Senior Staff Accommodation of area 466m ²) at Umm Salal
Community College of Qatar (CCQ)	2 nos G+1 Administration Building (Male and Female) at Lusail (Approx Area 736m²)
Production Workshop for Smart House	Design, Supply and Installation of Smart House Production Factory of approx (18,000m²) Including G+M Workshop, G+2 Office Building, Underground Fire Water Tank and Fire Pump Room, Maintenance Shed, Sub-station, Car Park, External and Internal MEP Services and Connections
Al Huda Engineering Works	Supply and Installation of Office Portacabins of area (400m ²) for Rumaillah Hospital
Al Huda Engineering Works	Supply and Installation of Office Portacabins of area (200m ²) for Qatar University
Qatar Armed Force	Supply and Installation of New Portacabin for Naval
Al Waha Contracting and Trading Co.	Supply and Installation of Various Size Portacabins of approx 256 m ²
Qatar Trading and Contracting Group (QTCG)	Supply and Installation of Site Office Cabin of area 670m ²

LIST OF FEW MAJOR CLIENTS



الهيئة العامة للجمارك
General Authority of Customs

ORYX GTL

اليخوت الأمير

AMIRI YACHTS



Qatar Deserves The Best



CCQ

مكتب المجتمع وقطر
Governor's Office of Qatar



Private Engineering Office (PEO)

قطر للبترول
Qatar Petroleum



شبكة الجزيرة الإعلامية
ALJAZEERA MEDIA NETWORK



الخليج العالمية للحفر
GULF DRILLING INTERNATIONAL

ooredoo



Qatar Engineering & Construction Company W.L.L
(Oil & Gas EPC & Maintenance Contractor)



بنك الدوحة
DOHA BANK



مركز قطر للمال
Qatar Financial Centre



SNC • LAVALIN



قطر ستيل
QATAR STEEL
www.qatarsteel.com.qa



وزارة الاقتصاد والتجارة
Ministry of Economy and Commerce



Ali Bin Ali
BEVERAGES



الريل رAIL



PETROSERV

ISG

A Joint Venture operating as:
IMPREGILO-SK E&C-Galfar Al Misnad JV
salini impregilo SK E&C Galfar

Galfar
AL MISNAD

QD-SBG
Construction

QDVC



L&T Construction

SONY

GSIC-JV

HYUNDAI
MOTOR GROUP

HYUNDAI
ENGINEERING & CONSTRUCTION

HBK
Contracting Co. W.L.L.



شركة ان سرياء للمقاولات
AL SRAIYA
CONTRACTING

AICI

بن عمران • BIN OMRAN
ENGINEERING & CONSTRUCTION S.L.L.

QD-CPC
شركة كيو دي - سي بي سي للمصنعات
QD.CPC INDUSTRIES
Your Complete Building Solution

AL HUDA ENGINEERING WORKS



Ghanem Holdings



Qatar Technical Aluminum



Al Mana Engineering & Contracting Co.

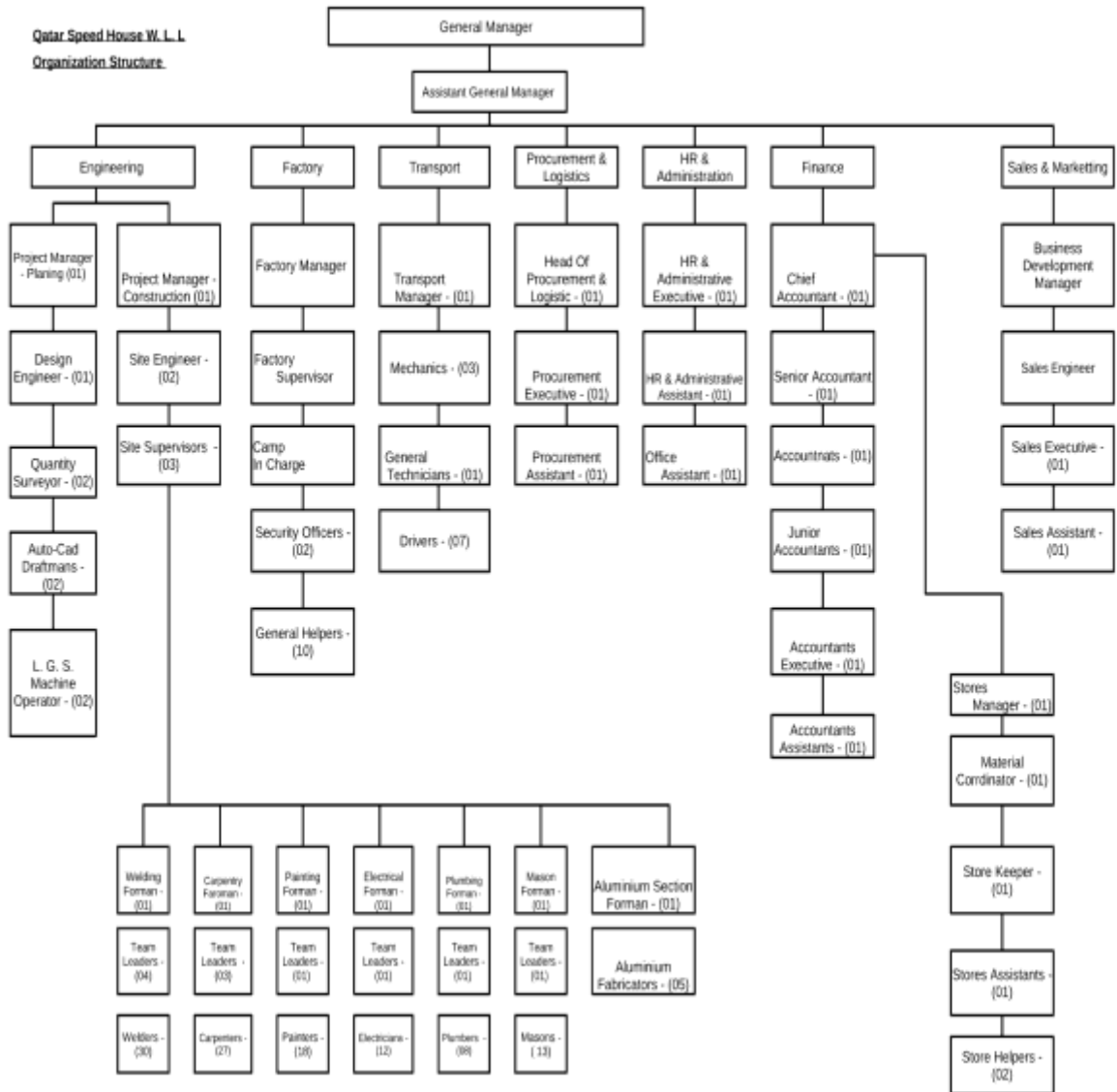


شركة المانع للهندسة والمقاولات



ORGANIZATION CHART

Qatar Speed House W. L. L
Organization Structure



COMPANY CERTIFICATES



تشهد إدارة تنظيم المشتريات الحكومية بأن السادة / قطر للمساكن السريعة
سجل تجاري رقم : 1077063 قد تم تصنيفهم في قطاع الموردين بالأنشطة والقطاعات التالية :

الحد الأقصى للنقاط	النقاط المكتسبة	بيان العناصر وأسس المال
10	6,800	صافي الموجودات مجموع قيمه العقود
20	20,000	عدد العقود
30	30,000	عدد الكادر الإداري
10	10,000	عدد الكادر الفني
20	20,000	
100	96,000	مجموع النقاط

مدير إدارته تنظيم المشتريات الحكومية

رقم النقاط	اسم النشاط	المدة أولى
578300	التجارة في الأئنيه الخفيفة أو الحديدية الجاهزة (الببوت المنجرك)	

- * الشروط
و الأحكام
1. عند استخدام صورة ضوئية من الشهادة يجب الإطلاع على الاصل و مطابقتها.
 2. لا يسمح بأي كشط أو تعديل أو تحريف في هذه الشهادة، وفي حال وجود أي تغيير أو تعديل بالبيانات الواردة فيها لن يمتد بها.
 3. تلزم الشركة بمراجعة إدارة تنظيم المشتريات الحكومية في تاريخ أقصاه 13/10/2019 لتحديث البيانات الخاصة بها .
و تعتبر هذه الشهادة لاعيه إذا لم تلزم الشركة بذلك في التاريخ المحدد للتحديث...

13/10/2019

صاحبه حق:

14/10/2018

تاريخ الإصدار:



أ. ب. ب. ب.
A. B. B. B.
A. B. B. B.



شهادة تصنيف Classification Certificate

18644/3 : سجل تجاري رقم

فطر للمساكن السريعة

تشهد إدارة تنظيم المشتريات الحكومية بأن السادة :
قد تم تصنيفهم في التخصصات و بالفئات التالية:

التخصص	الفئة	الحدود المالية
مباني	الخامسة	أكثر من 2 مليون الي 8 مليون
صيانة مباني	الخامسة	أكثر من 600 الف الي 2.4 مليون

التاريخ : ٢٠١٧/٠٥/٢٩

صلاحه حتى : ٢٠٢٠/٠٥/٢٨

مدير إدارة تنظيم المشتريات الحكومية



تطبيق الشروط و الاحكام الواردة بخلف الشهادة



Ref: M001-ISG-QSH-LTR-00023
Date: 31st March 2014

QATAR SPEED HOUSE
P.O. Box 41140
Doha, State of Qatar

Attention: Eng. Khalid A Moseh

Project: CONSTRUCTION OF DOHA METRO PROJECT – RED LINE NORTH UNDERGROUND
(CONTRACT NO. RTC/038/2012)

Subject: Purchase Order for supply, transportation, erection and commissioning on Site of Employer's Main Office, Employer's Satellite Offices and Contractor's Satellite Offices
Transmittal of Document – Subcontractor Engineer's Approval

Dear Sir,

We hereby inform you that Qatar Speed House has been approved by the Engineer for the execution of the subject Works. In line with this, please find herewith attached the relevant letter ref. M001-QRC-PMT-LTR-00362 dated 24th March 2014.

Furthermore, as requested in the attached letter, please indicate the date intended to carry out the audit to ensure your compliance with contractual and statutory Labour Welfare Standards.

Yours sincerely,

Barry Charles Grouthman
Project Director & Contractor's Representative
ISG Joint Venture

Enclosures : as stated above

Reply Required : Yes No

Response Required by Date:

Receipt Acknowledged: _____

A Joint Venture operating as:
IMPREGILO-SK E&C-Galfar Al Mianad JV



Al Mana Business Tower
6th Floor
Suheim Bin Hamad Street "C" Ring Road
P.O. Box 30637 Doha – State of Qatar

Tel: (+974) 40194100
Fax (+974) 40194205
info@isgjq.com



الريل ريل

تحقيق رؤيته
Accomplishing a Vision

Ref.: M001-QRC-PMT-LTR-00362
Date: 24 March 2014

ISG JV
Al Mana Business Tower
Suhaim Bin Hamad Street
C-Ring Road, Area 23
Bin Mahmoud
P.O. Box 30637
Doha, State of Qatar

Attention: **Barry Crouchman**
Contractor's Representative

Project: **Metro Phase 1 - Red Line North Underground – Contract No: RTC/038/2012**

Subject: **Approval of Subcontractor – Lump Sum Works – Qatar Speed House**

Reference: M001-ISG-COM-LTR-00101 dated 3 Nov 2013
M001-ISG-COM-LTR-00250 dated 30 Jan 2014
M001-ISG-COM-LTR-00351 dated 1 March 2014
M001-ISG-COM-LTR-00399 dated 12 March 2014

Dear Barry,

In accordance with Sub-clause 4.7.3 of the General Conditions of Contract (Vol. 3), the Engineer hereby approves the Contractor's submission of **Qatar Speed House** as a Subcontractor.

In furtherance of the Contractors commitment to ensuring compliance with contractual and statutory Labour Welfare Standards, the Engineer requests that the Contractor indicates the date intended to audit this Subcontractor and so ensure their adherence to these standards.

Yours sincerely,
For, and on behalf of, the Engineer

Gerhard Cordes
Engineer's Assistant – Qatar Rail Metro Red Line North

ISG JV		
Red Line North Underground		
IN	Date: / /	
Distrib.	ACT	CC
Proj Mgr.		
Dty Proj Mgr.		
Const. Mgr.		
Commer Mgr.		
Admin Mgr.		
Proj Cont. Mgr.		
Tech. Mgr.		
QA/QC Mgr.		
HSS Mgr.		
Env. Mgr.		
Proc. Mgr.		
J. Sultan / M. Al		
Sub. ADM.		

Handwritten initials and signatures around the table.





الريل رAIL

تحقيق رؤيه
Accomplishing a Vision

Cc: Stephen Bradbury, Sr. Contract Administrator – PMC Metro RLN
Gordon Torp-Petersen, Sr. Project Manager – QR Metro RLN
Gerrard Butterworth, Commercial Manager – QR Metro RLN
Ben San Jose, Project Controls Manager - QR Metro RLN
David Hobson, Project Director – PMC Metro RLN
David Glazier, PMC Deputy Project Director – PMC RLN Metro
Kristabel Betteley, Cost Engineer - PMC RLN Metro



Response Required: **YES** / NO

Response Date – on or before:



Receipt Acknowledge by:



COMPANY LICENSE



Registration and Commercial
Licenses Department

وزارة التجارة والصناعة
Ministry of Commerce and Industry

إدارة التسجيل
والتراخيص التجارية

رخصة تجارية



رقم الرخصة: 39400
الاسم التجاري: قطر للمساكن السريعة
نوع المنشأة التجارية: شركة
السمة التجارية:
تاريخ اصدار الرخصة: 2014/11/27
تاريخ انتهاء الرخصة: 2020/10/10
رقم السجل التجاري: 107063/1

بيانات المدير المسؤول :

اسم المدير المسؤول: عيسى محمد عيسى دوله
رقم الإثبات: 22940000010

بيانات الموقع :

تصنيف الموقع: صناعي
نوع الموقع: مصنع
المنطقة: 57 المنطقة الصناعية
الشارع: منطقة الصناعية
رقم الشارع: 41
عقار رقم: 452
رقم الدور/ الوحدة:
اسم مالك العقار: الدولة
نوع الرخصة:
وصف العنوان:

الأنشطة التجارية :

رقم النشاط	اسم النشاط	رقم النشاط	اسم النشاط
2511513	اعمال التركيبات الحديدية	4663007	التجارة في الحديد و الفولاذ و منتجاتهما



Installation and Maintenance

We have experienced team of project managers, project engineers, supervisors, technicians to manage any type of project ensuring the safety and quality during the installation.

We, Qatar Speed House are committed to deliver and complete the projects on time with full client's satisfaction. We have completed various projects for both governmental and private sectors.

We are also specialized in annual maintenance of camps, accommodations and various site facilities round the year. Customer satisfaction , durability and safety of our products is our top priority.

Our completed and ongoing projects have become landmarks of their respective fields; which is proof of our untiring effort to always fulfill our promises.

En route to success, our unique business model is more to do with meeting the necessities and investment opportunities. We are proud to have an edge over our competitors.

QUALITY ASSURANCE AND QUALITY CONTROL

Qatar Speed House(QSH) Quality Policy

Q.S.H Aims to provide our clients with the highest quality of goods and services that meet their required standards and purposes. We will always try to exceed their expatiations and recognize that the client values quality. We will focus on continual improvement of our performance, especially the areas that our clients identify as most important to them.

It is the quality policy of Q.S.H to meet our clients' requirements and to look for ways to exceed their expectations, all our personal are committed to implementing the QMS as a tool to assist in this.

The quality policy is made known to all personal within Q.S.H and is included and explained in all QMS training sessions, the QMS itself is reviewed to ensure its relevance and to improve its effectiveness.

Review of the quality policy is included on the agenda of the QMS review meeting. We firmly believe in total client satisfaction.

HEALTH AND SAFETY PLAN

At Qatar Speed House a Healthy Worker is a Producing Worker.

Health & Safety Plan

Health & Safety Statement

The Health, Safety and Work Environment of all Employees and Contractors, Personnel employed by QSH is a major concern of the Management. The Management is also concerned with the prevention of like property loss, fire and security damage as well as production losses. The Managing Director is firmly committed to taking effective action on this concern with full regard to Local Laws, Ministerial Decrees and the Company Safety Policy.

Managers, Executives, Foramens and Supervisors are responsible for the safety of their subordinates and are required to treat occupational health, safety and loss control as a subject of great efficiency. They shall ensure that all steps are taken to prevent accidents and maintain healthy & safe places of work.

In support of the commitment to safety, the Management monitors safety information and updates the information as required by corporate development or legislative change and ensures that safety rules are enforced, promotes awareness of safe working practices by induction courses, safety training programs and liaising with safety committees.

The Management firmly believes that safety comes first.